

- 1 Series name
- 2 Single output
- 3 Output wattage
- 4 Input voltage
24:DC18 - 36V
48:DC36 - 76V
- 5 Output voltage
- 6 Optional
R :with Remote ON/OFF
Positive logic control
T :with Mounting hole
F 3.4 thru
FO:with Addition of a
Heat sink

TRC ELECTRONICS, INC.
135 Pasadena Ave.
Lodi, NJ 07644 USA
Tel: 973.779.8282
Fax: 973.779.1490
www.trcelectronics.com
"Stocking Distributor"

MODEL	CBS1002403	CBS1002405	CBS1002412	CBS1002415	CBS1002424	CBS1002428	CBS1004803	CBS1004805	CBS1004812	CBS1004815	CBS1004824	CBS1004828
MAX OUTPUT WATTAGE[W]	77.2	100.0	100.8	100.5	100.8	100.8	77.2	100.0	100.8	100.5	100.8	100.8
DC OUTPUT	3.3V 23.4A	5V 20A	12V 8.4A	15V 6.7A	24V 4.2A	28V 3.6A	3.3V 23.4A	5V 20A	12V 8.4A	15V 6.7A	24V 4.2A	28V 3.6A

SPECIFICATIONS

	MODEL	= CBS1002403	CBS1002405	CBS1002412	= CBS1002415	= CBS1002424	CBS1002428	CBS1004803	CBS1004805	CBS1004812	CBS1004815	CBS1004824	CBS1004828	
INPUT	VOLTAGE[V]	DC18 - 36						DC36 - 76						
	CURRENT[A]	*1 4.07typ	5.02typ	4.77typ	4.81typ	4.83typ	4.83typ	2.01typ	2.48typ	2.36typ	2.38typ	2.39typ	2.39typ	
	EFFICIENCY[%]	*1 79typ	83typ	88typ	87typ	87typ	87typ	80typ	84typ	89typ	88typ	88typ	88typ	
OUTPUT	VOLTAGE[V]	3.3	5	12	15	24	28	3.3	5	12	15	24	28	
	CURRENT[A]	23.4	20.0	8.4	6.7	4.2	3.6	23.4	20.0	8.4	6.7	4.2	3.6	
	LINE REGULATION[mV]	10max	10max	24max	30max	48max	56max	10max	10max	24max	30max	48max	56max	
	LOAD REGULATION[mV]	10max	10max	24max	30max	48max	56max	10max	10max	24max	30max	48max	56max	
	RIPPLE[mVp-p]	-20 to +100C *2	80max	80max	120max	120max	120max	120max	80max	80max	120max	120max	120max	120max
		-40 to -20C *2	120max	120max	150max	150max	150max	150max	120max	120max	150max	150max	150max	150max
	RIPPLE NOISE[mVp-p]	-20 to +100C *2	120max	120max	150max	150max	150max	150max	120max	120max	150max	150max	150max	150max
		-40 to -20C *2	200max	200max	200max	200max	250max	250max	200max	200max	200max	200max	250max	250max
	TEMPERATURE REGULATION[mV]	0 to +65C	35max	50max	120max	150max	240max	280max	35max	50max	120max	150max	240max	280max
		-40 to +100C	66max	100max	240max	300max	480max	560max	66max	100max	240max	300max	480max	560max
DRIFT[mV]	*3	16max	20max	40max	60max	90max	90max	16max	20max	40max	60max	90max	90max	
START-UP TIME[ms]		200max (DCIN 24V, Io=100%)						200max (DCIN 48V, Io=100%)						
OUTPUT VOLTAGE ADJUSTMENT RANGE[V]	*4	Fixed (TRM pin open), 60 - 110% adjustable by external resistor												
OUTPUT VOLTAGE SETTING[V]		1.98 - 3.63	3.0 - 5.5	7.2 - 13.2	9.0 - 16.5	14.4 - 26.4	16.8 - 30.8	1.98 - 3.63	3.0 - 5.5	7.2 - 13.2	9.0 - 16.5	14.4 - 26.4	16.8 - 30.8	
OVERCURRENT PROTECTION		Works over 105% of rating and recovers automatically												
OVERVOLTAGE PROTECTION[V]		4.00 - 5.50	5.75 - 7.00	13.80 - 16.80	17.25 - 21.00	27.60 - 33.60	32.20 - 39.20	4.00 - 5.50	5.75 - 7.00	13.80 - 16.80	17.25 - 21.00	27.60 - 33.60	32.20 - 39.20	
REMOTE SENSING		Provided												
REMOTE ON/OFF		Provided (Negative logic L : ON, H : OFF)												
ISOLATION	INPUT-OUTPUT	DC1,500V or AC1,000V 1minute, Cutoff current = 10mA, DC500V 50MW min(20t 15C)												
	INPUT-CASE PIN, BASE PLATE	DC1,500V or AC1,000V 1minute, Cutoff current = 10mA, DC500V 50MW min(20t 15C)												
	OUTPUT-CASE PIN, BASE PLATE	AC500V 1minute, Cutoff current = 100mA, DC500V 50MW min (20t 15C)												
ENVIRONMENT	OPERATING TEMP., HUMID. AND ALTITUDE	-40 to +100C (On aluminum base plate), 20 - 95%RH (Non condensing) (Refer to DERATING CURVE), 3,000m (10,000feet) max												
	STORAGE TEMP., HUMID. AND ALTITUDE	-40 to +100C, 20 - 95%RH (Non condensing), 9,000m (30,000feet) max												
	VIBRATION	10 - 55Hz, 49.0m/s ² (5G), 3minutes period, 60minutes each along X, Y and Z axis												
	IMPACT	196.1m/s ² (20G), 11ms, once each along X, Y and Z axis												
SAFETY	AGENCY APPROVALS	UL60950, C-UL, EN60950												
OTHERS	CASE SIZE/WEIGHT	57.9×12.7×61.0mm (W×H×D) / 83g max												
	COOLING METHOD	Conduction cooling (e.g. heat radiation from the aluminum base plate to the attached heat sink)												

* 1 At rated input(DC24V,DC48V) and rated load.

* 2 Ripple and ripple noise is measured by using measuring board Measured by 20MHz oscilloscope or Ripple-Noise meter (Equivalent to KEISOKU-GIKEN:RM101).

* 3 Drift is the change in DC output for an eight hour period at

* 4 When the input voltage is in the range of DC18 - 20V, DC36 -

= marked models : Consult with us for delivery.

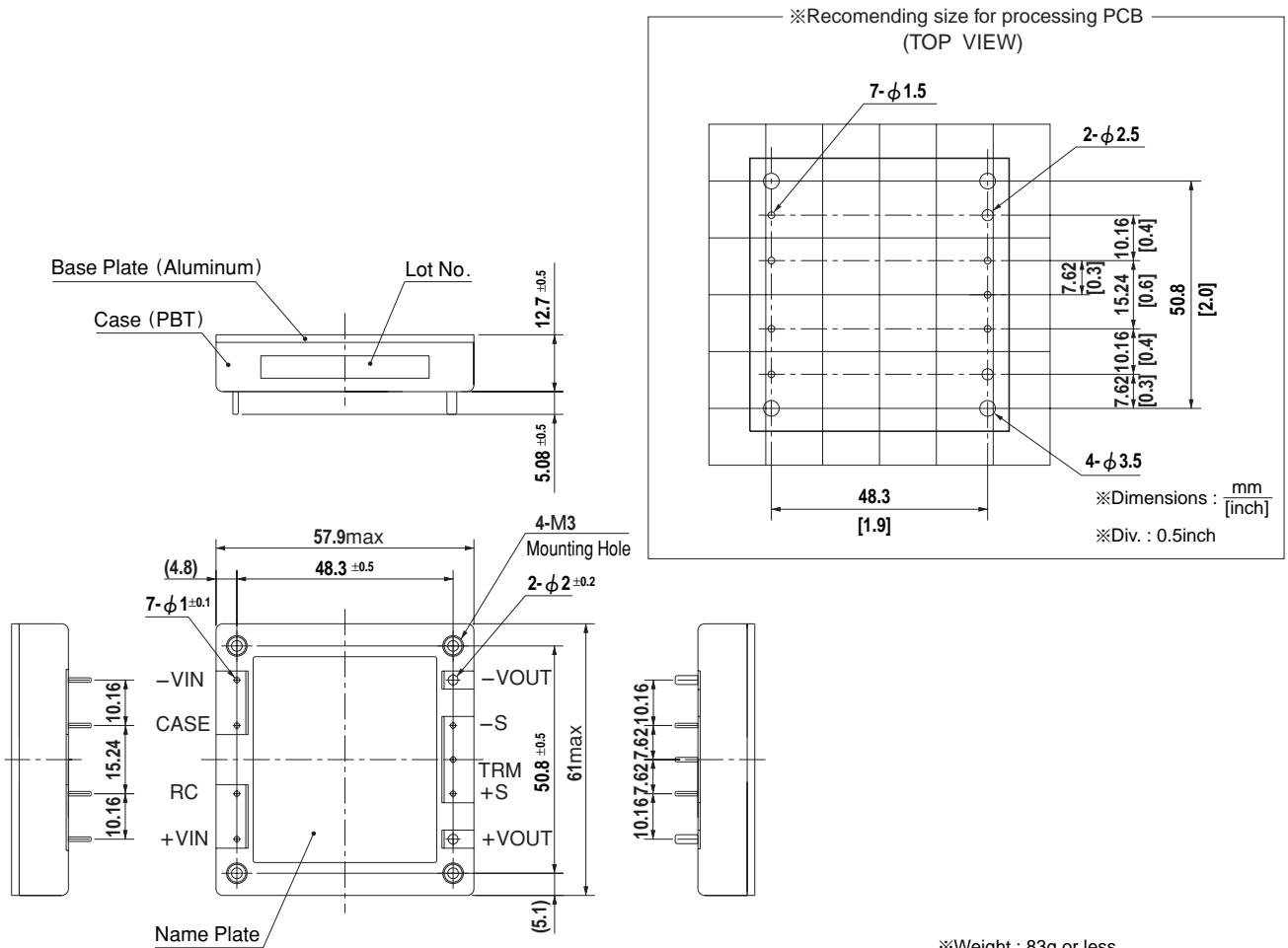
with recommended capacitor Co & the film capacitor 0.1

lent to KEISOKU-GIKEN:RM101).

ter a half-hour warm-up with the input voltage held constant at the rated input/vol

40V output voltage adjustment range is 60 - 105%.

External view



- ※Weight : 83g or less
- ※Tolerance : ±0.3
- ※Case : PBT
- ※Base Plate: Aluminum
- ※Dimensions in mm.
- ※Mounting hole screwing torque : 0.4N•m(5.0kgf•cm)max