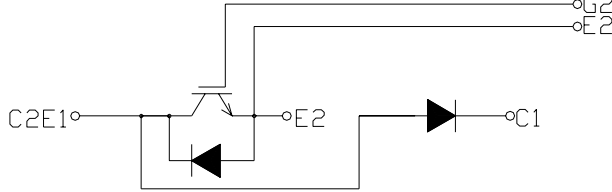
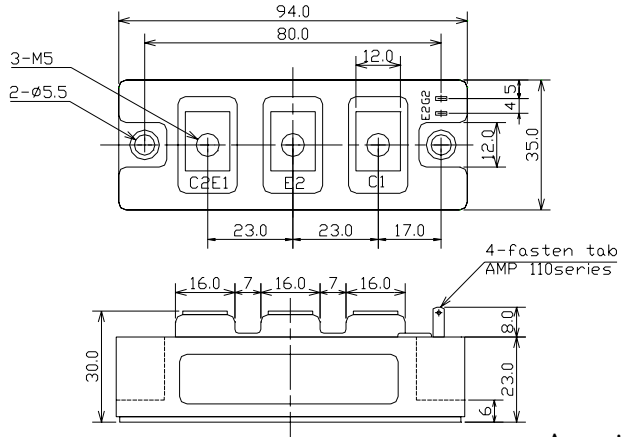


CIRCUIT



OUTLINE DRAWING



2-fasten- tab No 110

Dimension(mm)

Approximate Weight : 220g

MAXMUM RATINGS (Tc=25°C)

Item	Symbol	PRHMB50A6A	Unit
Collector-Emitter Voltage	V <sub>CEs</sub>	600	V
Gate - Emitter Voltage	V <sub>GEs</sub>	+/- 20	V
Collector Current	DC	I <sub>C</sub>	50
	1 ms	I <sub>C</sub>	100
Collector Power Dissipation	P <sub>C</sub>	250	W
Junction Temperature Range	T <sub>j</sub>	-40 to +150	°C
Storage Temperature Range	T <sub>stg</sub>	-40 to +125	°C
Isolation Voltage (Terminal to Base AC, 1 min.)	V <sub>ISO</sub>	2500	V
Mounting Torque	Module Base to Heat sink	F <sub>TOR</sub>	2.04
	Bus Bar to Main Terminals		

ELECTRICAL CHARACTERISTICS (Tc=25°C)

Characteristic	Symbol	Test Condition	Min.	Typ.	Max.	Unit
Collector-Emitter Cut-Off Current	I <sub>CEs</sub>	V <sub>CE</sub> =600V, V <sub>GE</sub> =0V	-	-	1.0	mA
Gate-Emitter Leakage Current	I <sub>GES</sub>	V <sub>GE</sub> =+/- 20V, V <sub>CE</sub> =0V	-	-	1.0	μA
Collector-Emitter Saturation Voltage	V <sub>CE(sat)</sub>	I <sub>C</sub> =50A, V <sub>GE</sub> =15V	-	2.0	2.5	V
Gate-Emitter Threshold Voltage	V <sub>GE(th)</sub>	V <sub>CE</sub> =5V, I <sub>C</sub> =50mA	4.0	-	8.0	V
Input Capacitance	C <sub>ies</sub>	V <sub>CE</sub> =10V, V <sub>GE</sub> =0V, f=1MHz	-	5000	-	pF
Switching Time	Rise Time	V <sub>CC</sub> = 300V R <sub>L</sub> = 6 ohm R <sub>G</sub> = 15 ohm V <sub>GE</sub> = +/- 15V	-	0.15	0.3	μs
	Turn-on Time		-	0.25	0.4	
	Fall Time		-	0.2	0.35	
	Turn-off Time		-	0.45	0.7	

FREE WHEELING DIODES RATINGS & CHARACTERISTICS (Tc=25°C)

Item	Symbol	Rated Value	Unit
Forward Current	DC	I <sub>F</sub>	50
	1 ms	I <sub>FM</sub>	100

Characteristic	Symbol	Test Condition	Min.	Typ.	Max.	Unit
Peak Forward Voltage	V <sub>F</sub>	I <sub>F</sub> =50A, V <sub>GE</sub> =0V	-	1.9	2.4	V
Reverse Recovery Time	t <sub>r</sub>	I <sub>F</sub> =50A, V <sub>GE</sub> =-10V, di/dt=50A/μs	-	0.15	0.25	μs

THERMAL CHARACTERISTICS

Characteristic	Symbol	Test Condition	Min.	Typ.	Max.	Unit
Thermal Impedance	IGBT	Junction to Case	-	-	0.5	°C/W
	DIODE		-	-	1.0	

