

MITSUBISHI IGBT MODULES
MG600Q1US59A

HIGH POWER SWITCHING APPLICATIONS
 MOTOR CONTROL APPLICATIONS

MG600Q1US59A



FEATURE

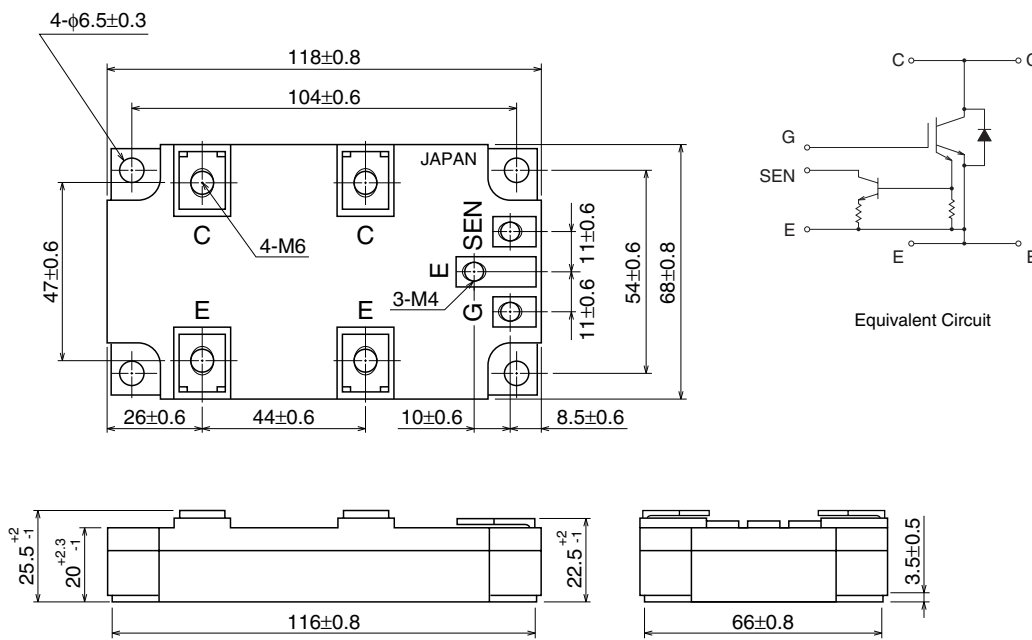
- The electrodes are isolated from case.
- Enhancement-mode
- Integrates fault-signal output circuit in package. (Short-Circuit and Over-Current)
- UL Recognized Yellow Card No.E80276
File No.E80271

APPLICATION

General purpose inverters, servo drives and motor controls

OUTLINE DRAWING & EQUIVALENT CIRCUIT

Dimensions in mm



Weight: 420g

MG600Q1US59A

**HIGH POWER SWITCHING APPLICATIONS
MOTOR CONTROL APPLICATIONS**

MAXIMUM RATINGS (Ta = 25°C)

Symbol	Parameter		Conditions	Ratings	Unit
V _{CE} S	Collector-emitter voltage			1200	V
V _{GE} S	Gate-emitter voltage			±20	V
V _{SE} S	Sense-emitter voltage			40	V
I _C	Collector current	DC		600	A
I _{CP}		1ms		1200	
I _F	Forward current	DC		600	A
I _{FM}		1ms		1200	
P _C	Collector power dissipation		T _C = 25°C	2750	W
T _j	Junction temperature			150	°C
T _{stg}	Storage temperature range			-40 ~ 125	°C
V _{isol}	Isolation voltage			2500 (AC 1 minute)	V
—	Screw	Terminal (M4/M6)		2/3	N • m
—	torque	Mounting		3	

ELECTRICAL CHARACTERISTICS (Ta = 25°C)

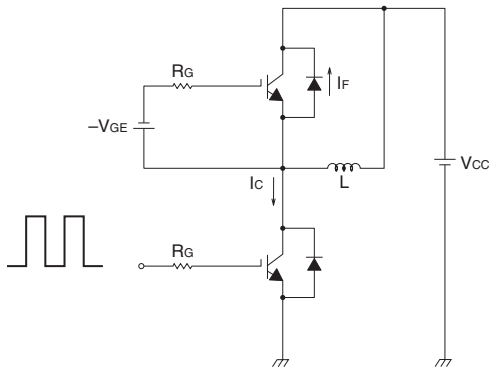
Symbol	Parameter	Test conditions	Limits			Unit	
			Min.	Typ.	Max.		
I _{GES}	Gate leakage current	V _{GE} = ±20V, V _{CE} = 0	—	—	±500	nA	
I _{CES}	Collector cut-off current	V _{CE} = 1200V, V _{GE} = 0	—	—	1.0	mA	
V _{GE(off)}	Gate-emitter cut-off voltage	I _C = 600mA, V _{CE} = 5V	4.0	—	7.0	V	
V _{CE(sat)}	Collector-emitter saturation voltage	I _C = 600A, T _j = 25°C	—	2.5	3.5	V	
C _{ies}	Input capacitance	V _{CE} = 10V, V _{GE} = 0, f = 1MHz	—	100000	—	pF	
t _{d(on)}	Switching time	Turn-on delay time	—	0.2	—	μs	
t _r		Rise time	Inductive load	—	0.1		—
t _{on}		Turn-on time	V _{CC} = 600V	—	0.3		—
t _{d(off)}		Turn-off delay time	I _C = 600A	—	1.15		—
t _f		Fall time	V _{GE} = ±15V	—	0.15		0.3
t _{off}		Turn-off time	R _G = 2Ω (Note 1)	—	1.3		—
V _F	Forward voltage	I _F = 600A, V _{GE} = 0	—	2.3	3.2	V	
t _{rr}	Reverse recovery time	I _F = 600A, V _{GE} = -15V, di/dt = 300A/μs (Note 1)	—	—	0.5	μs	
I _{SES}	Sense	Sense leakage current	V _{SEN} - E = 40V, V _{CE} = 0, V _{GE} = 0	—	—	200	nA
I _{C(SEN-START)}		Sense start current	V _{GE} = 15V, V _{SE} = 14.8V (Note 2)	1050	—	—	A
V _{SEN}		Sense voltage	V _{GE} = 15V, I _C = 2400A (Note 2)	—	—	13.2	V
R _{th(j-c)}	Thermal resistance		Transistor stage	—	—	0.045	°C/W
			Diode stage	—	—	0.125	

MG600Q1US59A

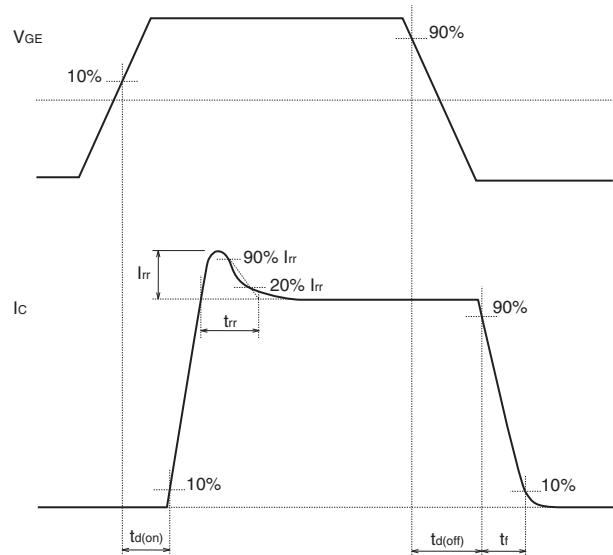
HIGH POWER SWITCHING APPLICATIONS
MOTOR CONTROL APPLICATIONS

Note 1: Switching time and reverse recovery time test circuit and timing chart

Switching time test circuit



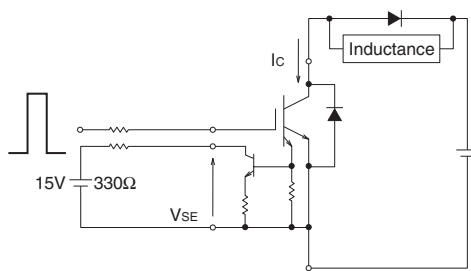
Timing chart



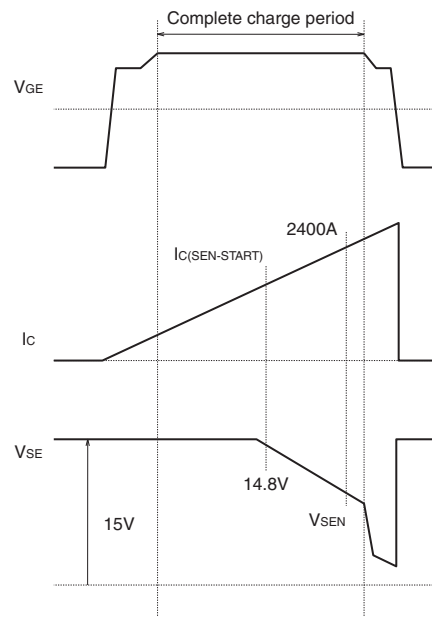
Note 2: Sense start current and sense voltage test circuit

Test circuit

*Measurement in the complete charge period.



Timing chart



MG600Q1US59A

HIGH POWER SWITCHING APPLICATIONS
MOTOR CONTROL APPLICATIONS

<VCE(sat) Rank>

VCE(sat)

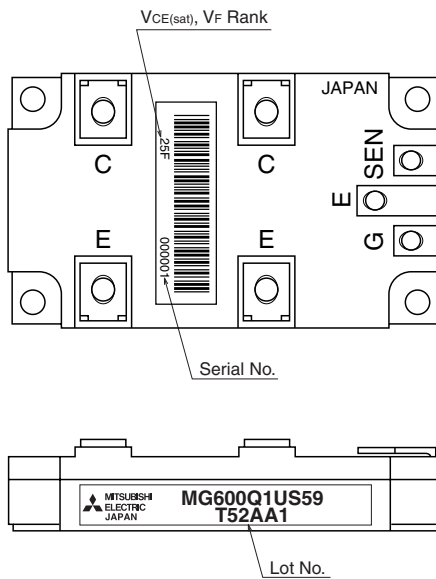
Rank symbol	MIN.	MAX.
22	1.9	2.2
23	2.0	2.3
24	2.1	2.4
25	2.2	2.5
26	2.3	2.6
27	2.4	2.7
28	2.5	2.8
29	2.6	2.9
30	2.7	3.0
31	2.8	3.1
32	2.9	3.2
33	3.0	3.3
34	3.1	3.4

<VF Rank>

VF

Rank symbol	MIN.	MAX.
B	1.5	1.8
C	1.7	2.0
D	1.9	2.2
E	2.1	2.4
F	2.3	2.6
G	2.5	2.8
H	2.7	3.0
I	2.9	3.2

<Mark position>

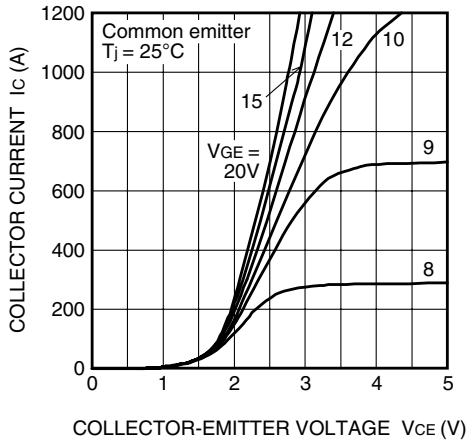


MG600Q1US59A

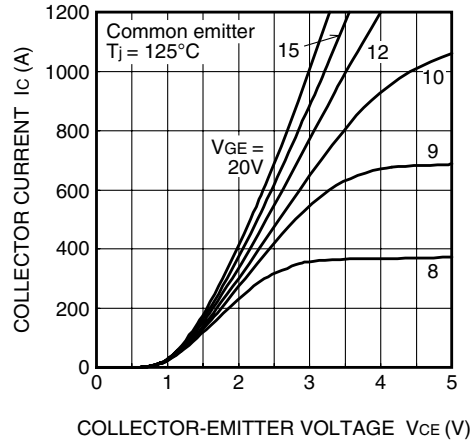
HIGH POWER SWITCHING APPLICATIONS
MOTOR CONTROL APPLICATIONS

PERFORMANCE CURVES

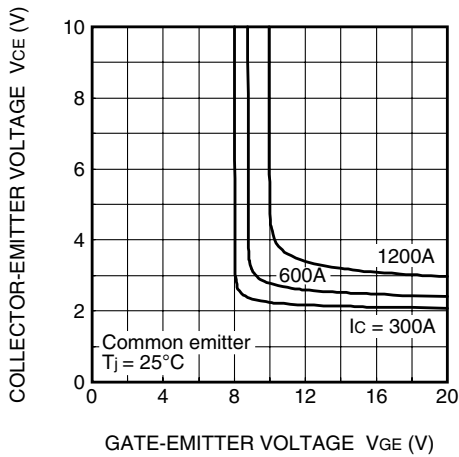
IC - VCE



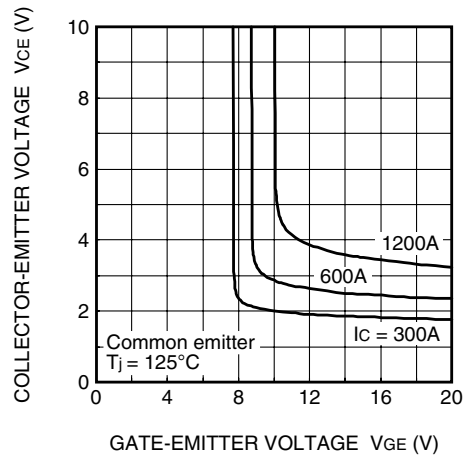
IC - VCE



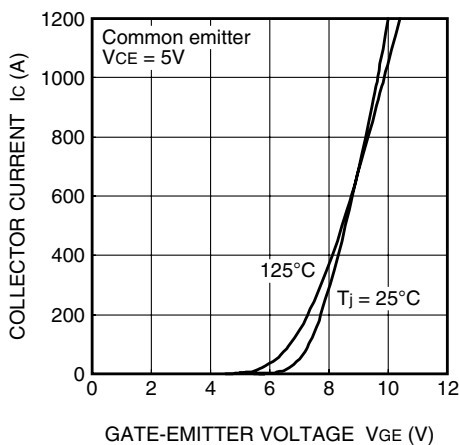
VCE - VGE



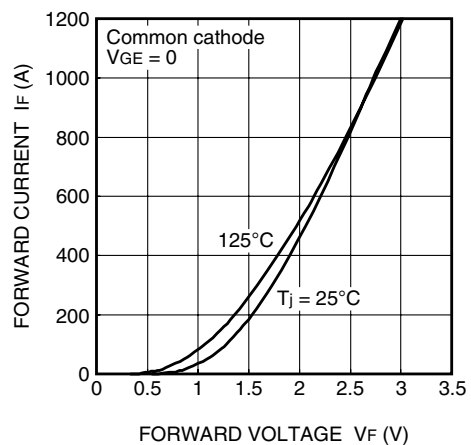
VCE - VGE



IC - VGE



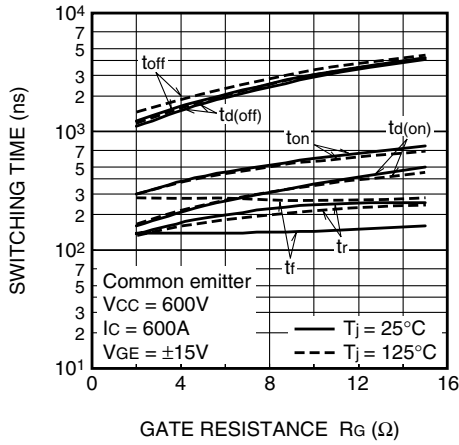
IF - VF



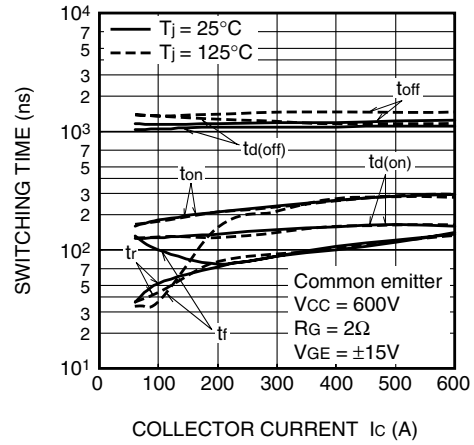
MG600Q1US59A

HIGH POWER SWITCHING APPLICATIONS
MOTOR CONTROL APPLICATIONS

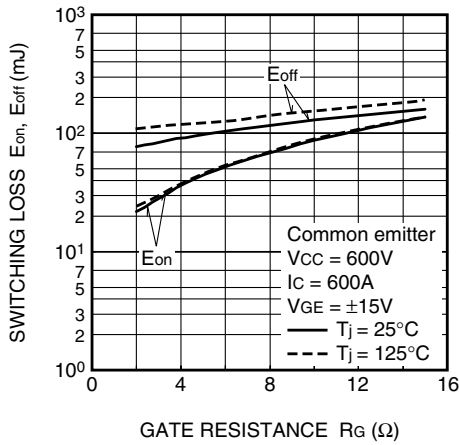
SW time - R_G



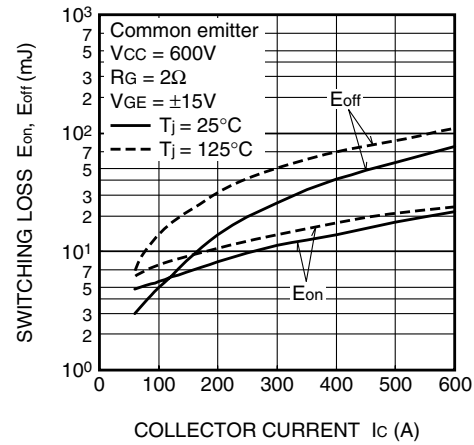
SW time - I_C



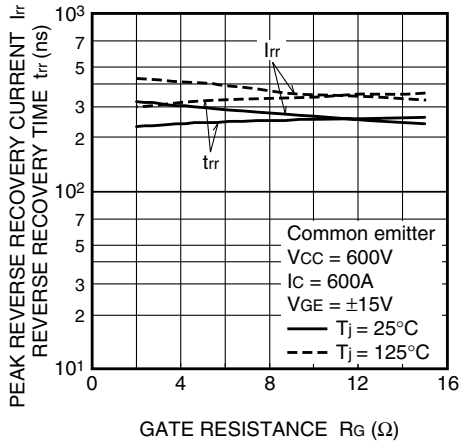
SW loss - R_G



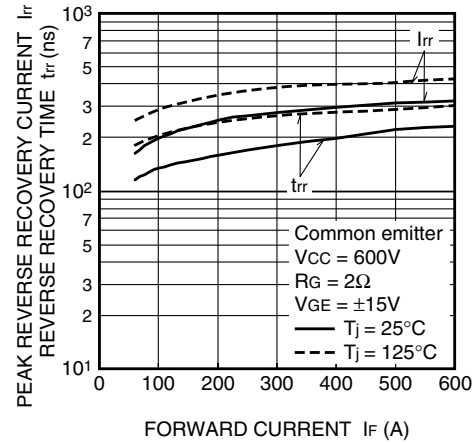
SW loss - I_C



I_{rr}, t_{rr} - R_G



I_{rr}, t_{rr} - I_F



MG600Q1US59A

HIGH POWER SWITCHING APPLICATIONS
MOTOR CONTROL APPLICATIONS

