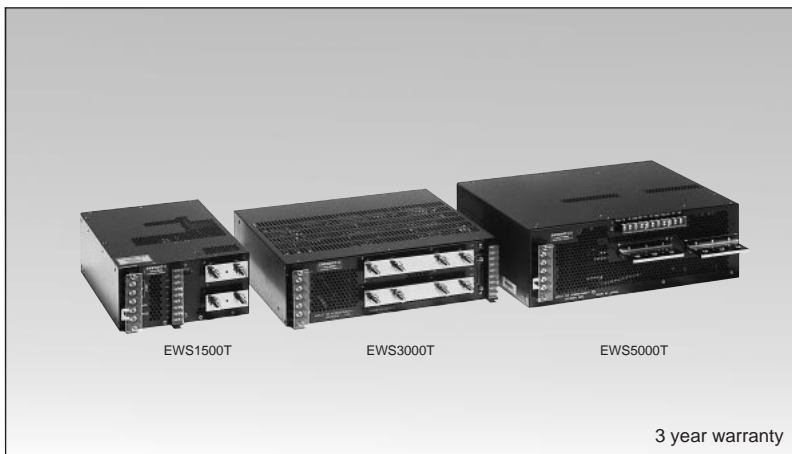


# EWS-T-SERIES

Single output 1500W ~ 5000W

**LAMBDA**  
DENSEI-LAMBDA

Unit Type Power Supply



## Model name

# EWS 1500T-5

Name of series      Output power      Nominal output voltage

## Features

- Compact size/3 phase-3 wire/High power  
Input: 3 $\phi$ 200V, Power factor: 0.95
- Output voltage programmable:  
0V to nominal output voltage by external control.  
Voltage adjustable range:  $\pm$ 20%
- Load current sharing
- Open phase detector
- 3 year warranty

## Specifications

<b>1. Input voltage range</b>	3 phases-3 wire 170 ~ 265VAC (47 ~ 63 Hz)
<b>2. Power factor</b>	0.95 (typ) 200VAC at full load
<b>3. Output voltage range</b>	$\pm$ 20% (2V, 3.3V: -10 ~ +20%), 0V to nominal output voltage x 120% by external control
<b>4. Cooling</b>	Forced air cooling by internal fan
<b>5. Operating ambient temperature</b>	-10 ~ +60°C (Standard mounting) Output derating: 70% at -10°C, 100% at 0 ~ +50°C, 70% at +60°C
<b>6. Withstand voltage</b>	Input-output: 2.5kVAC, Output-chassis: 2.5kVAC, Output-chassis: 500VAC for 1 min.
<b>7. Safety standard</b>	Conforms to UL and CSA
<b>8. Functions</b>	Over voltage protection, Over current protection, Thermal protection, Remote sensing Remote on/off control, Power failure signal, Output current balancing

## Product lineup

Model name	Nominal output voltage	Max. output current	Max. DC output power	UL	CSA	
EWS1500T	EWS1500T-2	2V	300A	600W	△	△
	EWS1500T-3.3	3.3V	300A	990W	△	△
	EWS1500T-5	5V	300A	1500W	△	△
	EWS1500T-10	10V	150A	1500W	△	△
	EWS1500T-12	12V	125A	1500W	△	△
	EWS1500T-15	15V	100A	1500W	△	△
	EWS1500T-24	24V	63A	1512W	△	△
	EWS1500T-36	36V	42A	1512W	△	△
EWS3000T	EWS1500T-48	48V	32A	1536W	△	△
	EWS3000T-2	2V	600A	1200W	△	△
	EWS3000T-3.3	3.3V	600A	1980W	△	△
	EWS3000T-5	5V	600A	3000W	△	△
	EWS3000T-10	10V	300A	3000W	△	△
	EWS3000T-12	12V	250A	3000W	△	△
	EWS3000T-15	15V	200A	3000W	△	△
	EWS3000T-24	24V	125A	3000W	△	△
EWS5000T	EWS3000T-36	36V	84A	3024W	△	△
	EWS3000T-48	48V	63A	3024W	△	○
	EWS5000T-2	2V	1000A	2000W	△	△
	EWS5000T-3.3	3.3V	1000A	3300W	△	△
	EWS5000T-5	5V	1000A	5000W	△	△

- Request customer specification for further details of specifications, outline, characteristics, etc.  
Read the instruction manual before usage.
- Contact us about delivery before ordering.

- : Safety standard approved
- △ : Conforms to safety standard

# EWS-T-SERIES

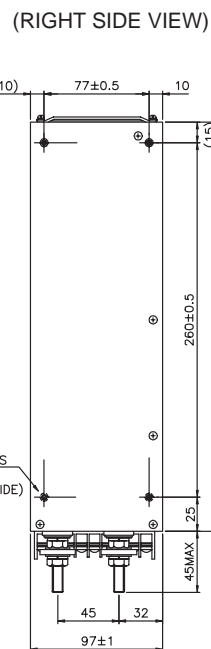
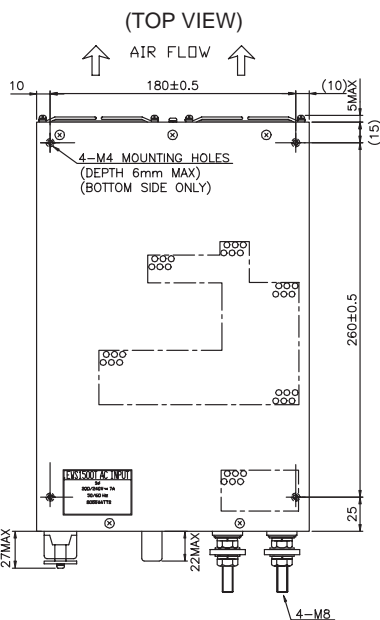
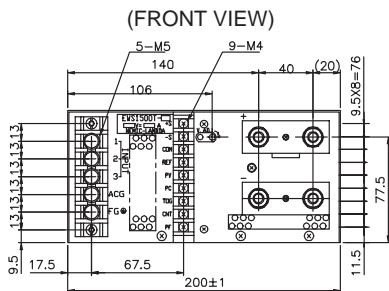
## EWS1500T

● Recommended Noise Filter

MB1310



GO!!  
P141



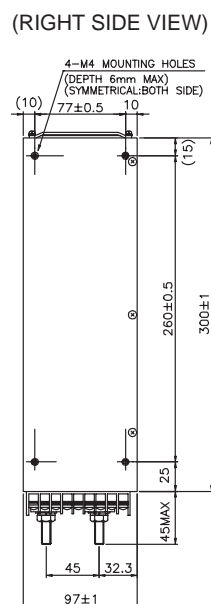
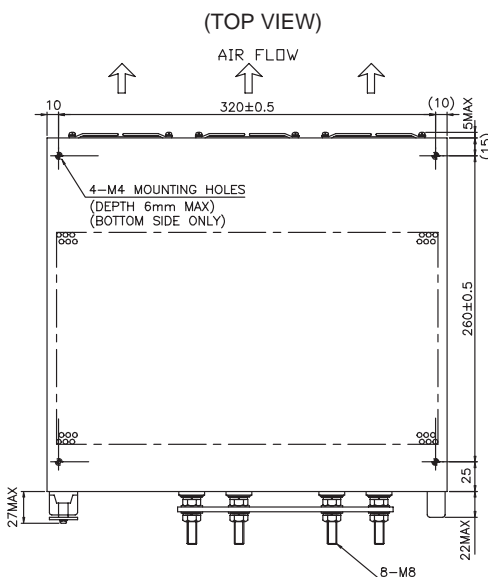
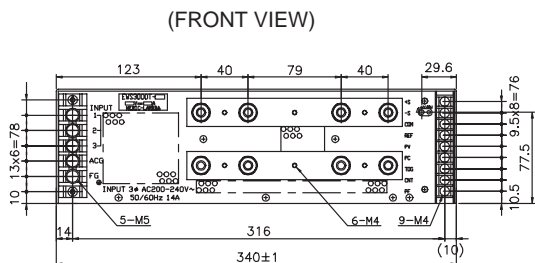
## EWS3000T

● Recommended Noise Filter

MB1320



GO!!  
P141



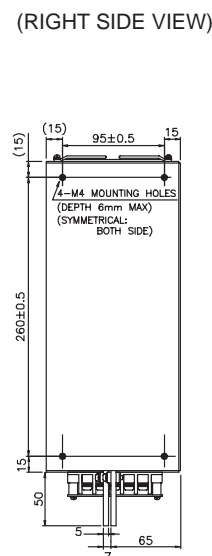
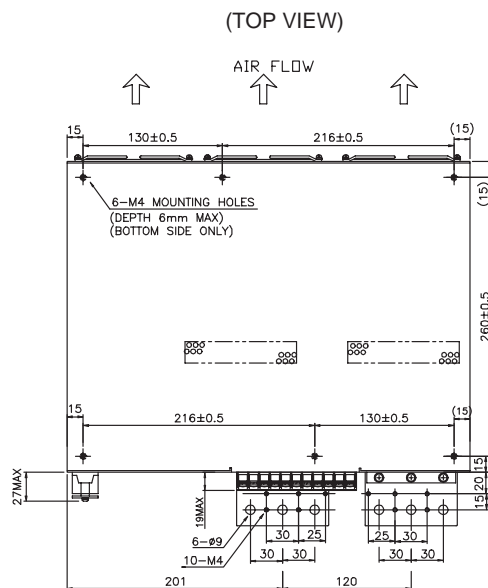
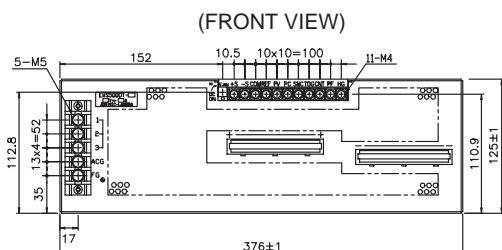
## EWS5000T

● Recommended Noise Filter

MB1330



GO!!  
P141



(Unit: mm)

# Mouser Electronics

Authorized Distributor

Click to View Pricing, Inventory, Delivery & Lifecycle Information:

[TDK-Lambda:](#)

[EWS1500T48](#) [EWS3000T48](#) [EWS5000T5](#)