

IGBT Standard Modules

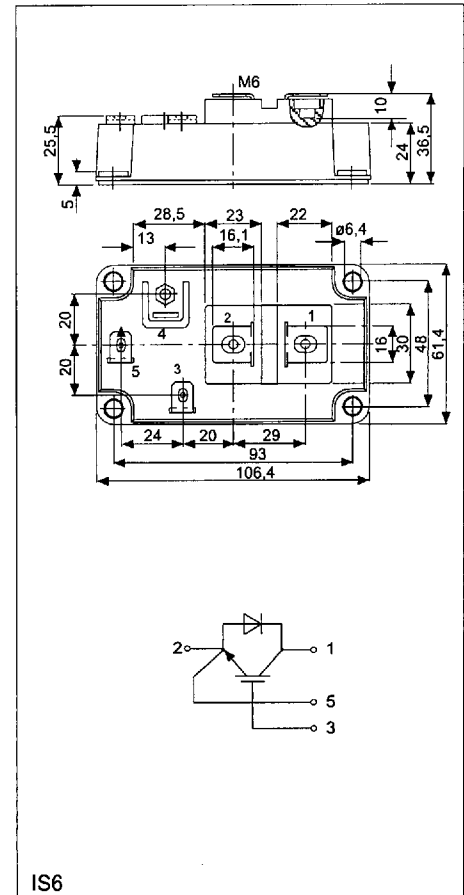
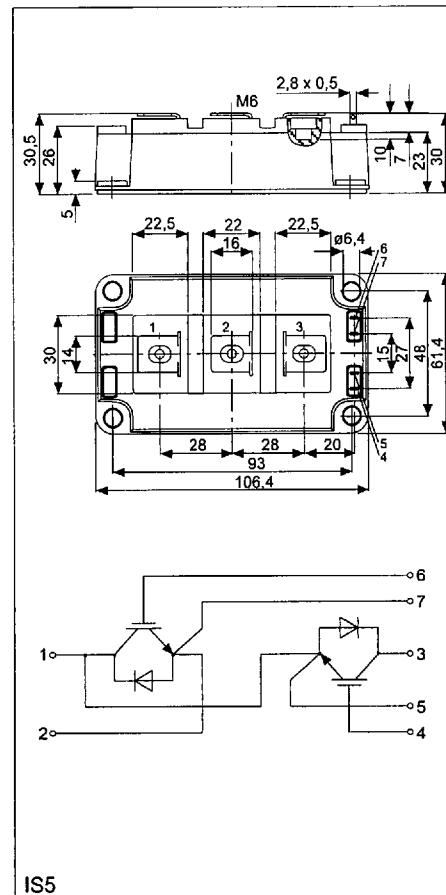
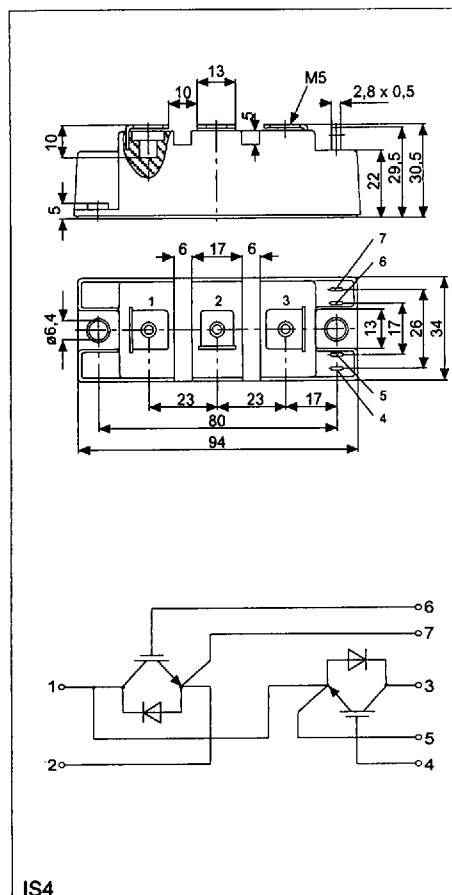
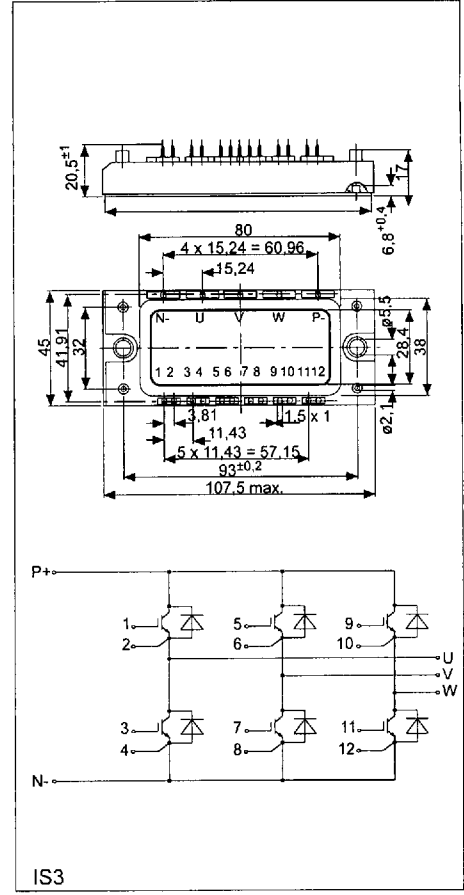
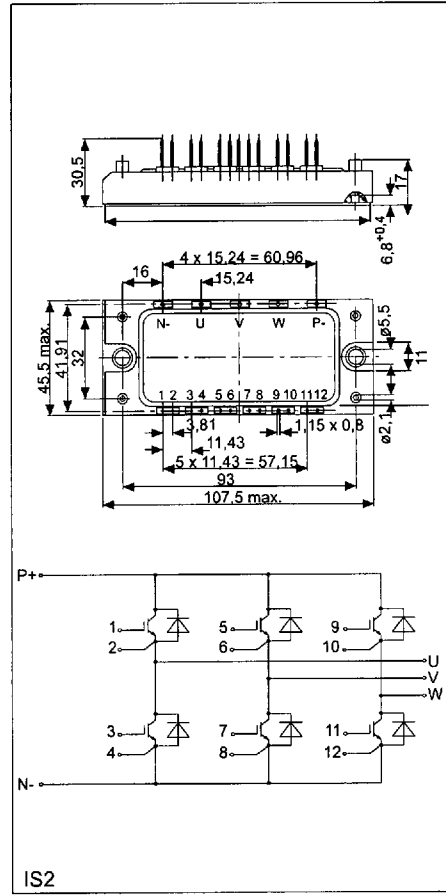
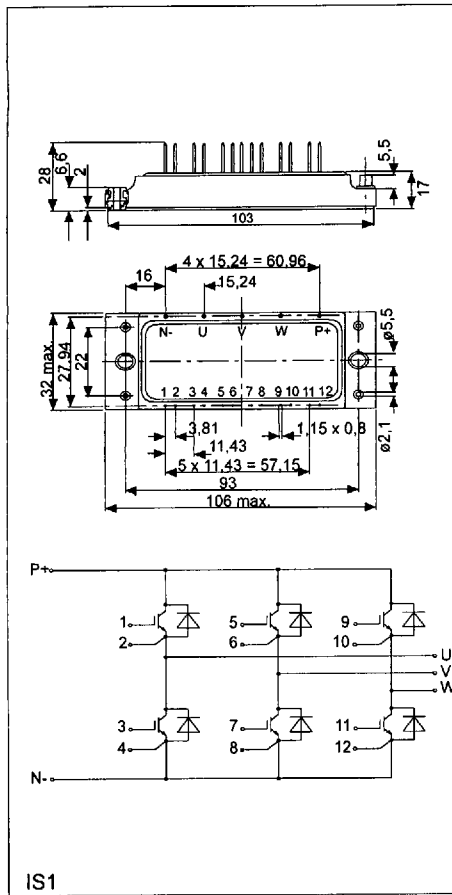
Range	Type	V _{ce} V	I _c A	R _{thjc} K/W ≤	P _{tot} W	V _{cesat} V	Outline	
600 V-Types 3-Phase-Full-Bridges	BSM 10 GD 60 DL	600	6 x 10	3.5	30	2.1	IS1	
	BSM 15 GD 60 DL	600	6 x 15	2.9	35	2.1	IS1	
	BSM 20 GD 60 DL	600	6 x 20	1.6	80	2.1	IS2	
	BSM 20 GD 60 DL E3224	600	6 x 20	1.6	80	2.1	IS3	
	BSM 30 GD 60 DL	600	6 x 30	1.2	100	2.1	IS2	
	BSM 30 GD 60 DL E3224	600	6 x 30	1.2	100	2.1	IS3	
	BSM 50 GD 60 DL	600	6 x 50	0.6	200	2.1	IS2	
	BSM 50 GD 60 DL E3226	600	6 x 50	0.6	200	2.1	IS3	
	BSM 75 GD 60 DL	600	6 x 75	0.44	280	2.1	IS3	
	BSM 100 GD 60 DL	600	6 x 100	0.35	350	2.1	IS8	
	BSM 150 GD 60 DN2	600	6 x 150	0.24	500	2.1	IS8	
	BSM 200 GD 60 DN 2	600	6 x 200	0.18	700	2.1	IS8	
	Half-Bridges	BSM 50 GB 60 DL	600	2 x 50	0.6	200	2.1	IS4
		BSM 75 GB 60 DL	600	2 x 75	0.44	280	2.1	IS4
BSM 100 GB 60 DL		600	2 x 100	0.35	350	2.1	IS4	
BSM 150 GB 60 DN 2		600	2 x 150	0.24	500	2.1	IS4	
BSM 200 GB 60 DN 2		600	2 x 200	0.18	700	2.1	IS4	
BSM 400 GB 60 DN 2		600	2 x 400	0.09	1400	2.1	IS5	
1200 V-Types 3-Phase-Full-Bridges	BSM 10 GD 120 DN 2	1200	6 x 10	1.52	80	2.7	IS2	
	BSM 10 GD 120 DN 2 E3224	1200	6 x 10	1.52	80	2.7	IS3	
	BSM 15 GD 120 DN 2	1200	6 x 15	0.86	145	2.5	IS2	
	BSM 15 GD 120 DN 2 E3224	1200	6 x 15	0.86	145	2.5	IS3	
	BSM 15 GD 120 D 2	1200	6 x 15	0.86	145	2.5	IS7	
	BSM 25 GD 120 DN 2	1200	6 x 25	0.6	200	2.5	IS2	
	BSM 25 GD 120 DN 2 E3224	1200	6 x 25	0.6	200	2.5	IS3	
	BSM 25 GD 120 D 2	1200	6 x 25	0.6	200	2.5	IS7	
	BSM 35 GD 120 DN 2	1200	6 x 35	0.44	280	2.7	IS2	
	BSM 35 GD 120 DN 2 E3224	1200	6 x 35	0.44	280	2.7	IS3	
	BSM 35 GD 120 D 2	1200	6 x 35	0.44	280	2.7	IS7	
	BSM 50 GD 120 DN 2	1200	6 x 50	0.35	350	2.5	IS3	
	BSM 50 GD 120 DN 2 E3226	1200	6 x 45	0.35	350	2.5	IS2	
	BSM 50 GD 120 DN 2 G	1200	6 x 50	0.35	400	2.5	IS8	
	BSM 75 GD 120 DN 2	1200	6 x 75	0.239	500	2.5	IS8	
	BSM 100 GD 120 DN 2	1200	6 x 100	0.182	500	2.5	IS8	
	Tripack	BSM 100 GT 120 DN 2	1200	3 x 100	0.182	500	2.5	IS9
BSM 150 GT 120 DN 2		1200	3 x 150	0.239	500	2.5	IS9	
BSM 200 GT 120 DN 2		1200	3 x 200	0.182	500	2.5	IS9	
Half-Bridges	BSM 25 GB 120 DN 2	1200	2 x 25	0.6	200	2.5	IS4	
	BSM 35 GB 120 DN 2	1200	2 x 35	0.44	280	2.7	IS4	
	BSM 50 GB 120 DN 2	1200	2 x 50	0.3	400	2.5	IS4	
	BSM 75 GB 120 DN 2	1200	2 x 75	0.2	625	2.5	IS4	
	BSM 100 GB 120 DN 2 K	1200	2 x 100	0.18	700	2.5	IS4	
	BSM 100 GB 120 DN 2	1200	2 x 100	0.16	800	2.5	IS5	
	BSM 150 GB 120 DN 2	1200	2 x 150	0.1	1250	2.5	IS5	
	BSM 150 GB 120 DN 2 E3166	1200	2 x 150	0.1	1250	2.5	IS5	
	BSM 200 GB 120 DN 2	1200	2 x 200	0.095	1400	2.5	IS5	

IGBT Standard Modules

continued

Range	Type	V _{ce} V	I _c A	R _{thjc} K/W ≤	P _{tot} W	V _{cesat} V	Outline
Choppers	BSM 25 GAL 120 DN 2	1200	50	0.6	200	2.5	IS4
	BSM 50 GAL 120 DN 2	1200	50	0.3	400	2.5	IS4
	BSM 75 GAL 120 DN 2	1200	75	0.20	625	2.5	IS4
	BSM 100 GAL 120 DN 2	1200	100	0.16	800	2.5	IS5
	BSM 150 GAL 120 DN 2	1200	150	0.1	1250	2.5	IS5
	BSM 150 GAL 120 DN 2E3166	1200	150	0.1	1250	2.5	IS5
	BSM 200 GAL 120 DN 2	1200	200	0.09	1400	2.5	IS5
Single Switches	BSM 200 GA 120 DN 2	1200	200	0.08	1550	2.5	IS6
	BSM 200 GA 120 DN 2 S	1200	200	0.08	1550	2.5	IS10
	BSM 300 GA 120 DN 2	1200	300	0.05	2500	2.5	IS6
	BSM 300 GA 120 DN 2 S	1200	300	0.05	2500	2.5	IS10
	BSM 300 GA 120 DN 2 E3166	1200	300	0.05	2500	2.5	IS6
	BSM 400 GA 120 DN 2	1200	400	0.045	2800	2.5	IS6
	BSM 400 GA 120 DN 2 S	1200	400	0.045	2800	2.5	IS10
Single Diode	BYM 300 A 120 DN 2	1200	300	0.125	1000	2.3	IS6
Low Loss	BSM 35 GD 120 DL / E3224	1200	6x35	0.44	280	2.2	IS2/3
	BSM 50 GD 120 DL / E3226	1200	6x50	0.35	350	2.2	IS2/3
	BSM 75 GD 120 DL	1200	6x75	0.24	520	2.2	IS8
	BSM 100 GD 120 DL	1200	6x100	0.182	680	2.2	IS8
	BSM 35 GB 120 DL	1200	2x35	0.44	280	2.2	IS4
	BSM 50 GB 120 DL	1200	2x50	0.35	350	2.2	IS4
	BSM 75 GB 120 DL	1200	2x75	0.24	520	2.2	IS4
	BSM 100 GB 120 DL	1200	2x100	0.16	800	2.2	IS4/5
	BSM 150 GB 120 DL	1200	2x150	0.10	1250	2.2	IS5
	BSM 200 GB 120 DL	1200	2x200	0.09	1400	2.2	IS5
	BSM 300 GB 120 DL	Data on request					
	BSM 200 GA 120 DL / DLS	1200	200	0.08	1550	2.2	IS6/10
	BSM 300 GA 120 DL / DLS	1200	300	0.05	2500	2.2	IS6/10
	BSM 400 GA 120 DL / DLS	1200	400	0.045	2700	2.2	IS6/10
	1700 V-Types Half-Bridges	BSM 50 GB 170 DN 2	1700	2 x 50	0.25	500	3.5
BSM 75 GB 170 DN 2		1700	2 x 75	0.2	625	3.5	IS4
BSM 100 GB 170 DN 2		1700	2 x 100	0.13	1000	3.5	IS5
BSM 150 GB 170 DN 2		1700	2 x 150	0.1	1250	3.5	IS5
BSM 150 GB 170 DN 2 E3166		1700	2 x 150	0.1	1250	3.5	IS5
Single Switches	BSM 200 GA 170 DN 2	1700	200	0.07	1750	3.5	IS6
	BSM 200 GA 170 DN 2 S	1700	200	0.07	1750	3.5	IS6
	BSM 300 GA 170 DN 2	1700	300	0.05	2500	3.5	IS6
	BSM 300 GA 170 DN 2 S	1700	300	0.05	2500	3.5	IS6
	BSM 300 GA 170 DN 2 E3166	1700	300	0.05	2500	3.5	IS6
Single Diodes	BYM 300 A 170 DN 2	1700	250	0.15	830	2.3	IS6
	BYM 600 A 170 DN 2	1700	400	0.09	1400	2.3	IS6
Low Loss	BSM 75 GD 170 DL	1700	6x75	0.2	625	3.25	IS8
	BSM 150 GB 170 DL	1700	2x150	0.1	1250	3.25	IS5
	BSM 200 GB 170 DL	1700	2x200	0.082	1500	3.25	IS5
	BSM 300 GA 170 DL / DLS	1700	300	0.05	2550	3.25	IS6/10
	BSM 400 GA 170 DL / DLS	1700	400	0.041	3000	3.25	IS6/10

IGBT Standard Modules



IGBT Standard Modules

